

Planned Verity

See more – with Verity



What to expect from your scan

Fast scanning

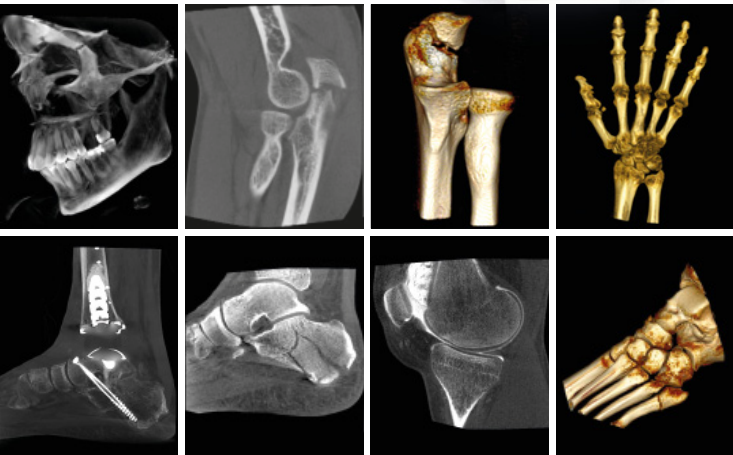
Scans with **Planmed Verity**[®] are performed by positioning the patient's extremities or face in the scanner's opening in either a seated or standing position. Red and green lasers indicate the scan area. During the 18 second scan the system captures multiple low dose X-ray images of the target area. It is important to relax and not move until instructed to do so.

Dedicated extremity scan – also weight-bearing

Planmed Verity provides on-demand in-office 3D imaging of anatomies that are otherwise difficult to scan. The scanner allows dedicated positioning for different purposes. Weight-bearing imaging is also possible, depending on the clinical need.

Maxillofacial scans

Sinus or maxillofacial trauma imaging is easy with Planmed Verity's seated positioning and **MaxScan**[™] carbon-fibre support.



The complete 3D imaging experience

At Planmed, we aim to develop imaging technology that takes patients, users, orthopaedists, and radiologists all into account.

Our **Planmed Verity**[®] extremity and maxillofacial scanner has been designed to provide the best possible experience in all situations:

- Fast and relaxed exams for patients – at a low dose
- Effortless and ergonomic usability
- High quality 3D imaging

How do we ensure the best experience?

The key to the best possible care is to consider all aspects of treatment. We are committed to pairing unmatched patient comfort with trained medical experts and cutting-edge technology – for the most reliable results achievable.





Individual needs – complete solutions

We strive to provide the best experience for all involved.

Patient experience

Trust in the professionalism of the staff and equipment helps to make exams comfortable and less intimidating especially for paediatric patients.

User experience

Users of the scanner have gone through extensive training in order to achieve a perfect image of every patient. Our easy-to-use equipment helps them ensure better results.

Orthopaedist experience

Orthopaedists trust imaging equipment that is reliable and provides answers that help to treat patients.

Radiologist experience

Finding a balance between the best possible image quality at the lowest achievable patient dose is essential to the work of radiologists.

Key facts

- Dimensions (W x L x H):
76 x 184 x 160 cm / 29.9" x 72.4" x 63.0"
- Either mobile or fixed configuration
- Gantry height and tilt controlled from a joystick
- **TearDrop™** shaped bore
- Plugs into a standard electric outlet
- Integrated workstation with a touchscreen
- Available in a wide range of upholstery colours

Planned innovations

Planned Verity®

Mobile cone beam CT (CBCT) scanner for three-dimensional extremity scans.

Planned Verity® with MaxScan™

Available maxillofacial imaging option.

Weight-bearing CT

The world's first CT device for foot, ankle, and knee scans of standing patients.

References

Colin F, Horn Lang T, Zwicky L, Hintermann B, Knupp M. Subtalar joint configuration on weightbearing CT scan. *Foot Ankle Int.* 2014 Jul 11.

Hirschmann A, Pfirrmann CW, Klammer G, Espinosa N, Buck FM. Upright Cone CT of the hindfoot: Comparison of the non-weight-bearing with the upright weight-bearing position. *Eur Radiol.* 2013 Sep 26.

For more references visit www.planmed.com



Planmed

Our Planmed Verity extremity and maxillofacial CBCT scanners are designed and manufactured in Helsinki, Finland. The scanners are sold through a global network of trained distributors who provide local support and communication between Planmed and our end users.

For more information, visit
www.planmed.com



Planmed Oy, Sorvaajankatu 7, 00880 Helsinki, Finland
tel. +358 20 7795 300, fax +358 20 7795 664
sales@planmed.com

Planmed is part of Planmeca Group.
www.planmeca.com

Images may contain optional items not included in the standard delivery.
Rights for changes reserved.

